



For LUXMAN D/A Converter Windows/Mac-ready USB Driver Installation Manual

● Recommended PC conditions for Windows and Mac

CPU: Intel Core i3 or higher
Memory: 4GB or more

OS: Windows 10, Windows 11
mac OS v10.15 (Catalina) or later

Compatible models: DA-07X, DA-06, DA-250, DA-150, DA-200, DA-100, D-08u, D-06u, D-05u, D-N150, D-03X, D-03R, D-10X, D-07X, D-100 CENTENNIAL (As of April 2026)



Caution

With Windows OS, connection between a PC and the D/A converter using a USB cable shall not be made before installing this driver software. Failure to observe this may cause malfunction.

This driver software is required when using Bulk Pet transfer mode on a Mac with the following models: D-N150, D-03X, D-10X, D-07X, DA-07X, D-03R, D-100 CENTENNIAL.

This driver software can be used with general music playback software.

When using the product as a D/A converter on a Windows PC with an earlier driver version installed, uninstall the old driver before installing the latest version.

* The product will not operate properly if the latest version is installed while an old version remains installed.

■ License agreement conditions

- The provided software is copyrighted by LUXMAN CORPORATION, JAPAN (hereafter called LUXMAN) and the original right holder.
- The provided software can be used only for the purpose of using LUXMAN's products corresponding to each provided software and only in Japan.
- When the provided software is used, the restrictions, precautions, and the like regarding each provided software clearly stated in this service shall be observed.
- Modification, alteration, and analysis with use of reverse engineering, decompilation, disassembling, etc. of all or part of provided software shall be prohibited.
- Distribution via communication lines, transfer, sale, lending, and license of the provided software to a third party after duplication of the software in a floppy disk, a magnetic tape, a USB memory, etc. shall be prohibited.
- LUXMAN, LUXMAN sales companies, distributor, contracted dealers, and the original right holder of the provided software shall have no responsibility for the damage, loss, and the like caused by combining the provided software with devices or programs other than those specified in the restrictions, precautions, and the like clearly stated in this service or caused by altering the provided software.
- LUXMAN, LUXMAN sales companies, distributors, contracted dealers, and the original right holder of the provided software shall have no assurance responsibility or liability for the provided software.

• Mac and Mac OS are trademarks of Apple Inc., registered in the U.S. and other countries.

• Windows is a registered trademark of Microsoft Corporation in the United States and/or other countries.

• DSD is a trademark.

• Bulk Pet is a registered trademark of INTERFACE Co., LTD.

• The described company names and product names are trademarks or registered trademarks of each company.

AG00021F03K

Driver Installation <for Windows>

1. Load the installation software CD supplied with the product, let the contents of the CD be displayed, and double-click the "LUXMAN_Audio Driver" folder to open it.

When the downloaded driver from the LUXMAN's website is used, double-click the downloaded compressed file (ZIP format) to open it.

This step is required for models that do not include an installation software CD: DA-250, DA-150, D-N150, D-03X, D-10X, D-07X, DA-07X, D-03R, D-100 CENTENNIAL

2. Double-click the downloaded driver file to start installation.

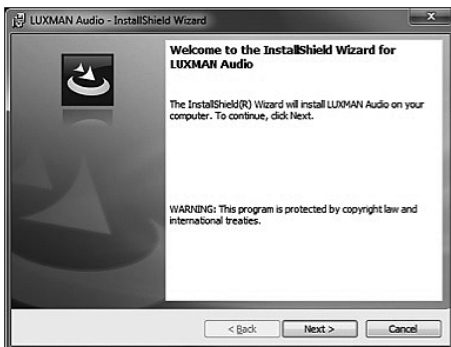
LUXMAN_Audio.exe

If the dialog box is displayed to confirm the approval of change to your computer, click "Approve" or "Yes" button to move forward.

3. Select a language to be displayed on the installation screen of this driver, and click "OK" button.



4. Read the displayed explanation, and click "Next" button.



5. Confirm the license agreement of this driver, select "I accept the terms in the license agreement", and click "Next" button.



6. Click "Install" button.



7. If the dialog box is displayed again during installation, click "Install" or "Continue" button to move forward.



For Windows 7

8. When the installation completion screen is displayed, click "Finish" button to finish the installation.



Connection to PC <for Windows>

After completing the driver installation, first connection between a PC and the D/A converter or CD/SACD player with USB input allows the driver to be automatically configured.

After the driver of the connected D/A converter or CD/SACD player with USB input is successfully configured, you can see that the model name of the connected product is registered as a playback device in "Playback" tab under "Sound" in "Control Panel" in Windows.

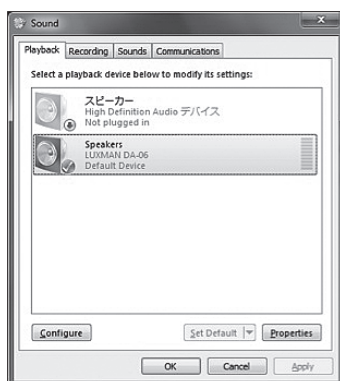
Example: If the connected product is DA-06, you can see that "LUXMAN DA-06" is registered as a playback device.



Windows Setting

During playback via the D/A converter connected to a PC with a music playback software such as Windows Media Player, click the connected model name as a playback device in "Playback" tab under "Sound" in "Control Panel" in Windows and press "Set Default" button.

Example: If the connected product is DA-06, select "LUXMAN DA-06" as a playback device.



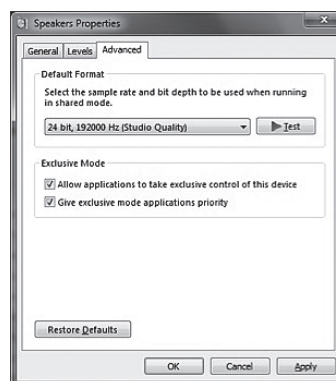
If you would like to output only playback sound of music files from the D/A converter connected to a PC using a music playback software* applicable to Windows exclusive mode, select a device other than the connected model from the playback devices described above with "Set Default" button. In this case, the Windows event sound (alarm and incoming mail tone) selected in the "Sound" tab is not provided from the connected D/A converter or CD/SACD player with USB input.

* Examples of sound playing software applicable to the exclusive mode:

foobar2000, HQ Player, LUXMAN Audio Player and more

If "Properties" button is pressed in the state of selecting the connected product name on the screen at left, the settings of the connected D/A converter can be changed.

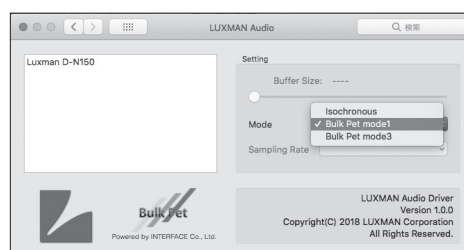
Under "Advanced", the sample rate (sampling frequency) and bit depth (quantization bit count) can be selected in the shared mode used at playback using Windows Media Player and the like.



Caution

When 384000 Hz is displayed in the list box of "Default Format", sound of 384000 Hz is not provided because of Windows limit even if the number is selected. Be sure to select a sampling frequency of 192000 Hz or less, and click the "OK" button to determine the setting.

• Configuration of control panel

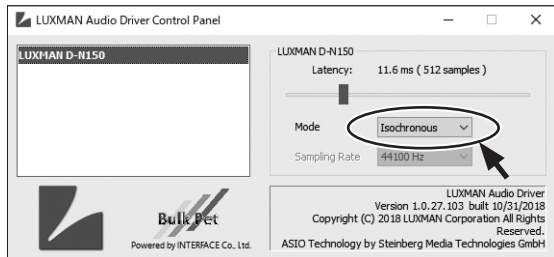


While music data is played back, the sound is interrupted or noise is generated owing to underperforming PC. In this case, the problem may be resolved by opening "LUXMAN Audio Driver Control Panel" in the "Control Panel" and increasing the buffer size with use of the slider.

Transmission Mode Setting <for Windows>

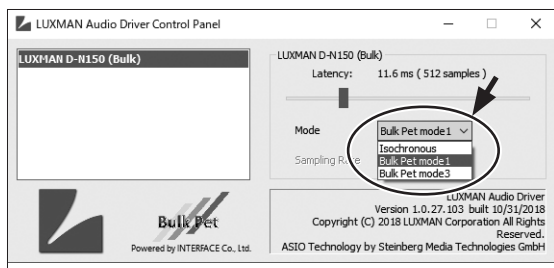
For the D-N150, D-03X, D-10X, D-07X, DA-07X, D-03R, and D-100 CENTENNIAL, the transfer mode can be switched between Isochronous and Bulk Pet.

Set the transmission mode and pattern in "LUXMAN Audio Driver Control Panel" accessing from Windows "Control Panel".



The default after the driver installation is "Isochronous".

Also, two data transfer patterns are available for Bulk Pet.
(For the D-10X, D-07X, D-03X, D-03R, DA-07X, and D-100 CENTENNIAL, four data transfer patterns are available.)



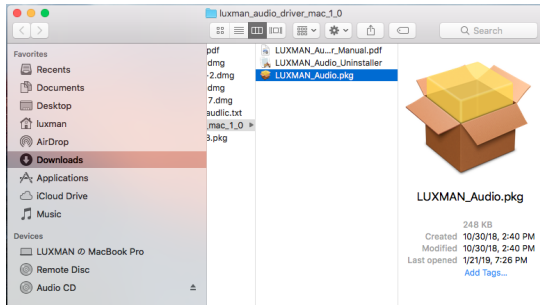
For details on Bulk Pet transmission, refer to the URL below:

https://www.itf.co.jp/prod/audio_solution/bulk-pet/bulk-pet-en

Driver Installation <for Mac>

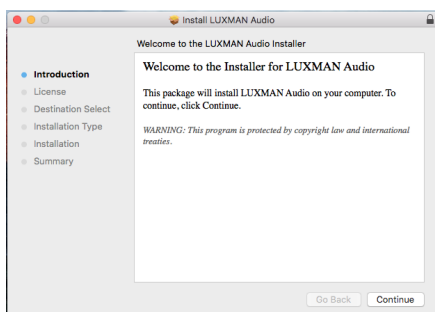
For D-N150, D-03X, D-10X, D-07X, DA-07X, D-03R, and D-100 CENTENNIAL, install this driver when using Bulk Pet transfer mode.

1. When using a driver uploaded on the LUXMAN's website, unzip the downloaded file.

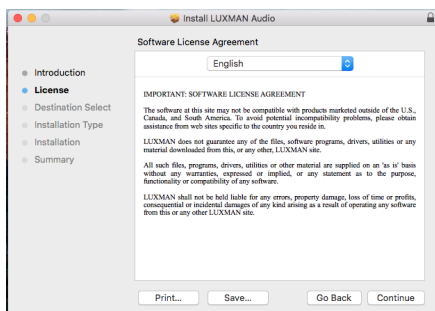


Double-click LUXMAN_Audio.pkg to start installation.

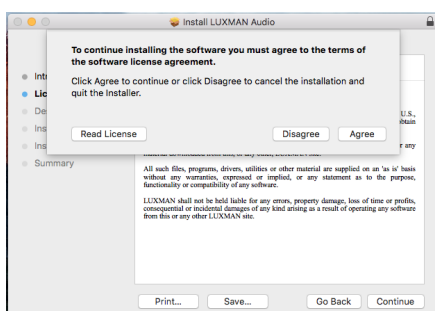
3. Read the displayed explanation, and click the "Continue" button.



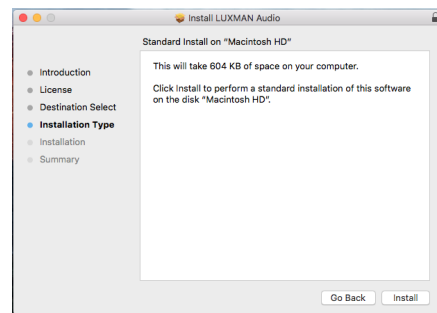
4. Confirm the license agreement of this driver, and click the "Continue" button.



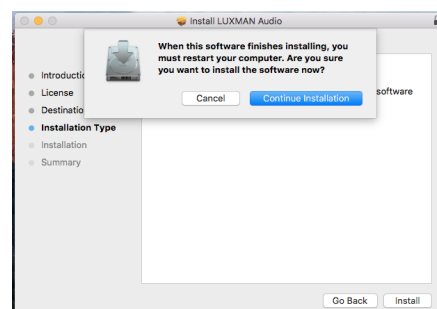
5. Click the "Agree" button.



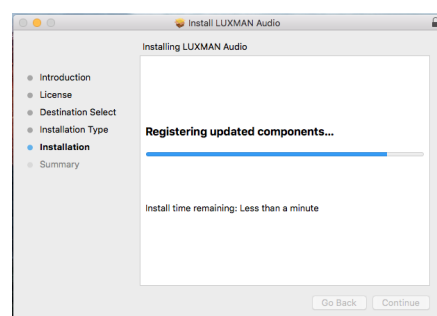
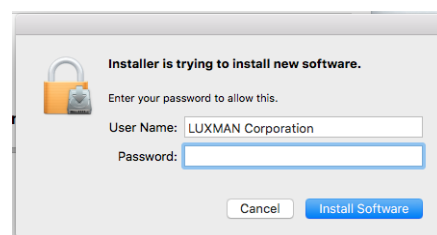
6. Click the "Install" button.



After exiting other running applications, click the "Continue Installation" button.



7. Enter the Mac user name and the password.



9. When the installation completion screen is displayed, click the "Restart" button to finish the installation.

